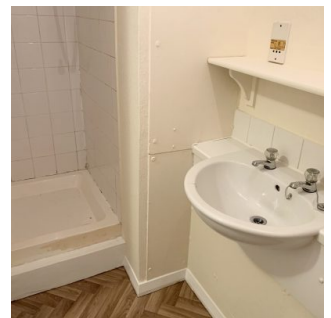


PROPERTY PARTICULARS

STONEFIELD CLOSE, SWINDON, SN5 7EH
Stonefield Close, Eastleaze, Swindon, SN5 7EH

£85,999



Moovahome offer for sale this ground floor studio apartment situated in a popular residential area in Eastleaze, just minutes from all the amenities in West Swindon. The flat consists of a living space

Bedrooms 1
Reception Rooms 1

+ Ideal BTL Investment Opportunity with Rental Value of £500 per month
+ No Onward Chain & Vacant Possession

PROPERTY PARTICULARS

Living Rooms

1

+ Off-Road Parking available

PROPERTY PARTICULARS

Moovahome offer for sale this ground floor studio apartment situated in a popular residential area in Eastleaze, just minutes from all the amenities in West Swindon. The flat consists of a living space, kitchen, dressing room and bathroom. The property represents an excellent investment opportunity and is sold with no onward chain and vacant possession. Benefits of the property include off-road parking and shared garden area. Moovahome offer flexible, accompanied viewings for this property as well as the video tour.

Situation

Eastleaze is a popular residential area of Swindon with excellent access to Junction 16 of the M4 linking Swindon to London, Bristol and beyond. Swindon's Rail Station is approximately a fifteen-minute drive and London Paddington can be reached in just 55 minutes via train.

Local amenities include a range of pubs, local shops and West Swindon's Shaw Ridge Leisure Park and Link Centre. Located nearby in West Swindon are excellent schools from Nursery through to a Secondary School. There are also regular bus services to and from the Town Centre and Orbital Centre.

Layout of the Property

Living Space – 4.45m x 2.61m

The property is accessed via a wooden front from the communal hallway. Newly fitted carpet flooring and a wall mounted electric heater. Two UPVC double glazed windows to the rear of the building. A TV connection point is available. A door to the dressing room and open access to the kitchen completes.

Kitchen – 1.79m x 2.14m

Vinyl flooring laid throughout and a UPVC double glazed windows to the side of the building. A range of wall and base units fitted throughout. Wooden worktops complete with a mottled finish and splashback tiles over the top. A stainless-steel sink unit with a mixer tap and drainer. A free standing electric cooker including an oven and hob. A wall mounted, electric heater and an airing cupboard housing the water tank and shelving. The kitchen is complete with a free-standing fridge/freezer and an under worktop washing machine which are included in the sale.

Dressing Room – 1.21m x 2.00m

Vinyl flooring laid throughout and a wall mounted consumer unit. An opening to the wardrobe consisting of two clothes rails. A folding door opens to the bathroom.

Bathroom – 1.28m x 2.61m

A white bathroom suite comprising of a low-level W.C, pedestal wash hand basin and a single shower cubicle complete with a wall mounted, electric shower. A range of splashback tiles fitted throughout. Vinyl flooring laid throughout and a wall mounted electric heater. A wall mounted extractor fan and shaver point complete.

Parking

Off-Road parking is available to the side of the property. Additional parking is available throughout Stonefield Close.

Lease/Charges

The original lease had 120 years. The lease currently has 81 years remaining. The property was built in 1981.

The ground is approximately £52.60 per annum.

A management charge of £200 per annum applies.

The current rental value of the property is £525.

The property has an Energy Performance Rating of D

PROPERTY PARTICULARS

The Council Tax Band for the property is A

These particulars have been prepared by Moovahome Ltd, although due care and attention to detail has been carried out their accuracy is not guaranteed. Moovahome Ltd advise any potential purchaser to check the property fully prior to submitting an offer of purchase.

Furthermore, the fixtures and fittings including the heating system and appliances have not been checked by Moovahome Ltd, by describing these items we do not infer that they are in working condition. In addition to this, we are not guaranteeing their inclusion in any sale. All room sizes are approximate and should be checked prior to ordering furnishings for a property.

An Energy Performance Certificate (EPC) for this property is available on request.